

R052029A

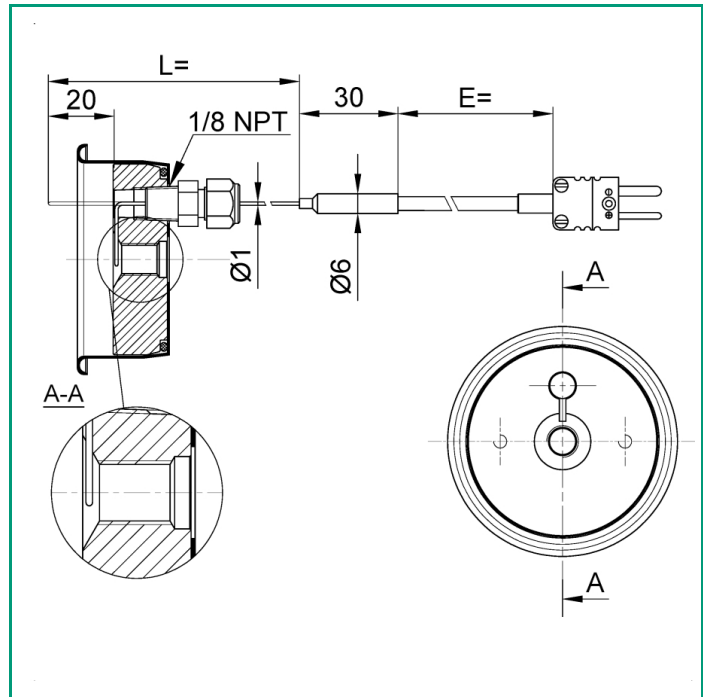
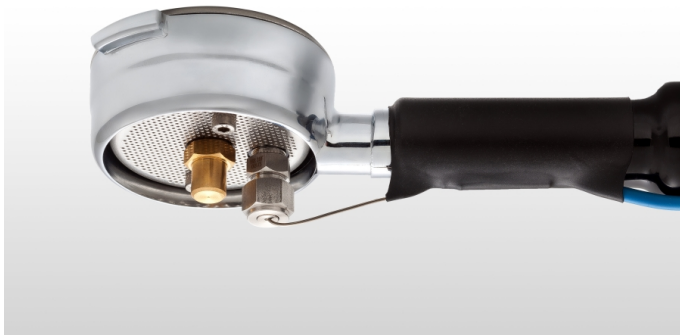
Rev. 0 - 10/06/2022

THERMOFILTER

Mineral insulated thermocouple for coffee machine testing

- T thermocouple in compact mineral insulation cable (M.I.C.) Ø 1 mm AISI 316, ungrounded hot junction
- transition Ø 6 x 30 mm NICKEL PLATED BRASS
- T compensated cable insulated in SILICON RUBBER
- MINIATURE MALE compensated connector

The thermocouple has to be jointed to the filter cup (provided by customers) through sliding compression fitting in INOX 1/8 NPT-M with PTFE sealant gland+STAINLESS STEEL pressing bush



TECHNICAL SPECIFICATION

Sensing element operating temperature range (Thermocouple)	-200 ÷ 370°C
Thermocouple calibration	type T (copper-constantan)
Sheet material	AISI 316
Number of sensing elements (T/C) (*) (*) Number Elements (T/C) asterisco	single
Hot measuring joint	insulated
Accuracy class in accordance with IEC 584	1 (SPECIAL)
Sheath diameter d	Ø 1 mm
M.I.C. min. bending radius	3 times the outer diameter
Insulation resistance	100 M Ω @ 100 Vdc.
Stem length L	104 mm
Transition sleeve type	METALLIC Ø 6 mm L.T.
Transition sleeve diameter	Ø 6 mm
Transition sleeve length	30 mm
Transition sleeve material	BRASS NIKEL PLATED
Maximum transition temperature	120°C

TECHNICAL SPECIFICATION

Compensated cable	silicone; type T ANSI
Cable conductors	tipo T
Norm of reference	ANSI MC96.1
Number of cable conductors	2
Conductor dimension	AWG 24
Conductor feature	strand (7 wire)
Primary insulation	GS (silicone rubber)
Secondary insulation	GS (silicone rubber)
Cable size or external shape	about Ø 4,2 mm
Cable working temperature	-40 ÷ 180°C
Cable extension E	1500 mm
Fixing system	raccordo a compressione scorrevole con bussola PTFE + premi bussola INOX