

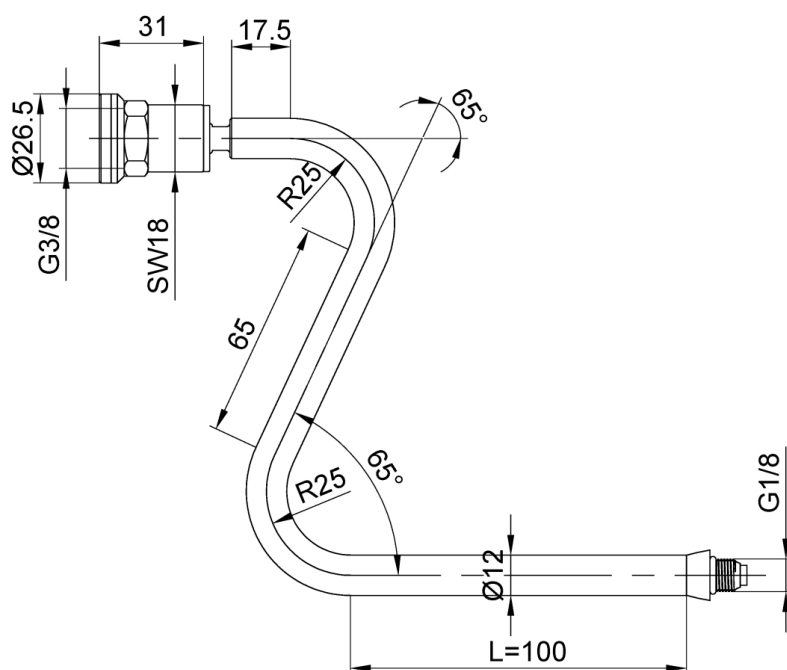
C091102A

Rev. 0 - 10/06/2022

U-CAN TOUCH PLUS STEAM TUBE (VACUUM TECHNOLOGY)

STEAM TUBE

WITH SINTERED CAP



TECHNICAL SPECIFICATION

| | |
|---|--|
| Spherical articulated joint | AISI 303 |
| Threaded process connection (*) (* Thread STANDARDS (CYL. GAS in accordance with UNI-ISO 228) (CON. GAS in accordance with UNI-ISO 7-1) (NPT in accordance with ANSI B 1.20.1) | 3/8" GAS CIL. 1/8" GAS CIL. |
| Process connection material | AISI 303 |
| wand tube | Ø 12 mm |
| tube material | AISI 304L |
| Sheath length L | 100 mm |
| Fixing system | threaded connection |
| FCM Prescriptions | Before the use is required to wash the food contact areas |
| Contact food type | LATTE ACQUA/VAPORE |
| Type of contact | short and frequently |
| Notes for FCM | la LANCIA è idonea al contatto con ACQUA/VAPORE a 130°C e LATTE a 70°C |